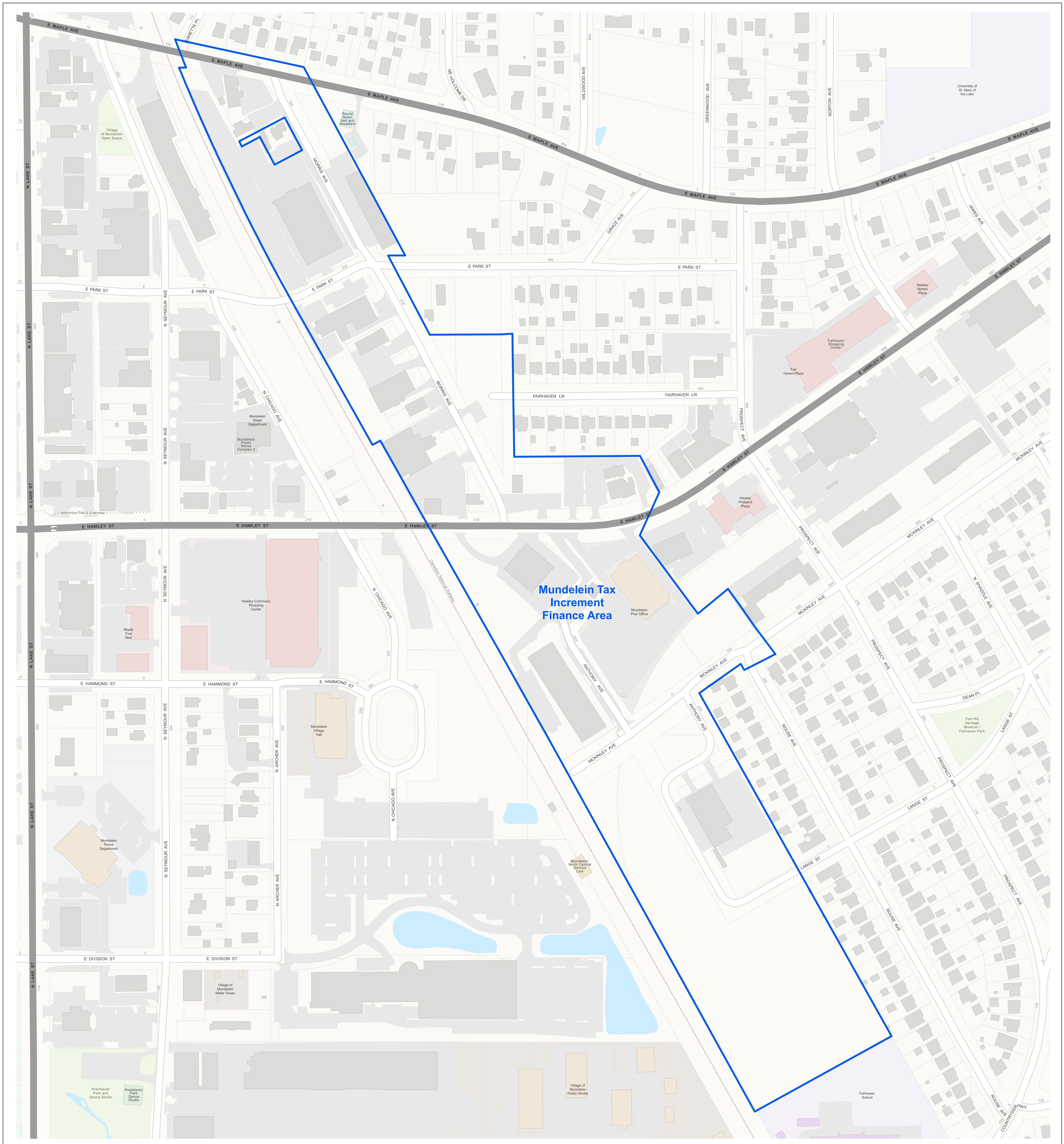

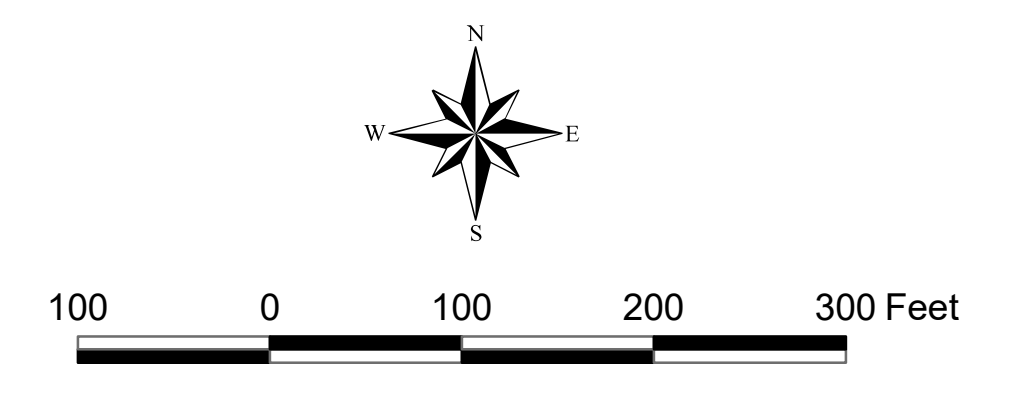
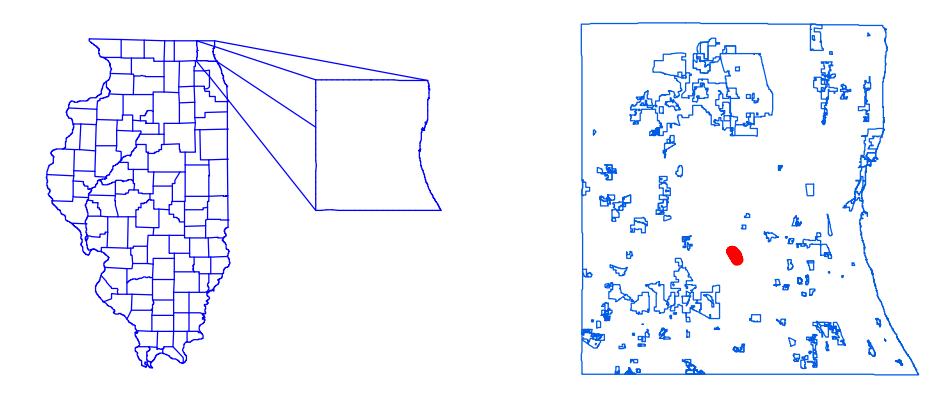


# Mundelein Tax Increment Finance Area




  
 Prepared by:
   
 Lake County Department of Information Technology
   
 GIS Division
   
 18 North County Street
   
 Waukegan, Illinois 60085-4357
   
 (847) 377-2388



Revised:  
2017

Landmark Classification		District Boundary
Agriculture, Food, and Livestock	Industry; Mail and Shipping	District Boundary
Banking and Finance; Commercial and Retail	Public Attractions	Tax Parcels
Emergency Response and Law Enforcement	Parks and Forest Preserves	Railroad
Education	Water	Trails and Paths
Health and Medical	Cemetery	
	Golf Course	