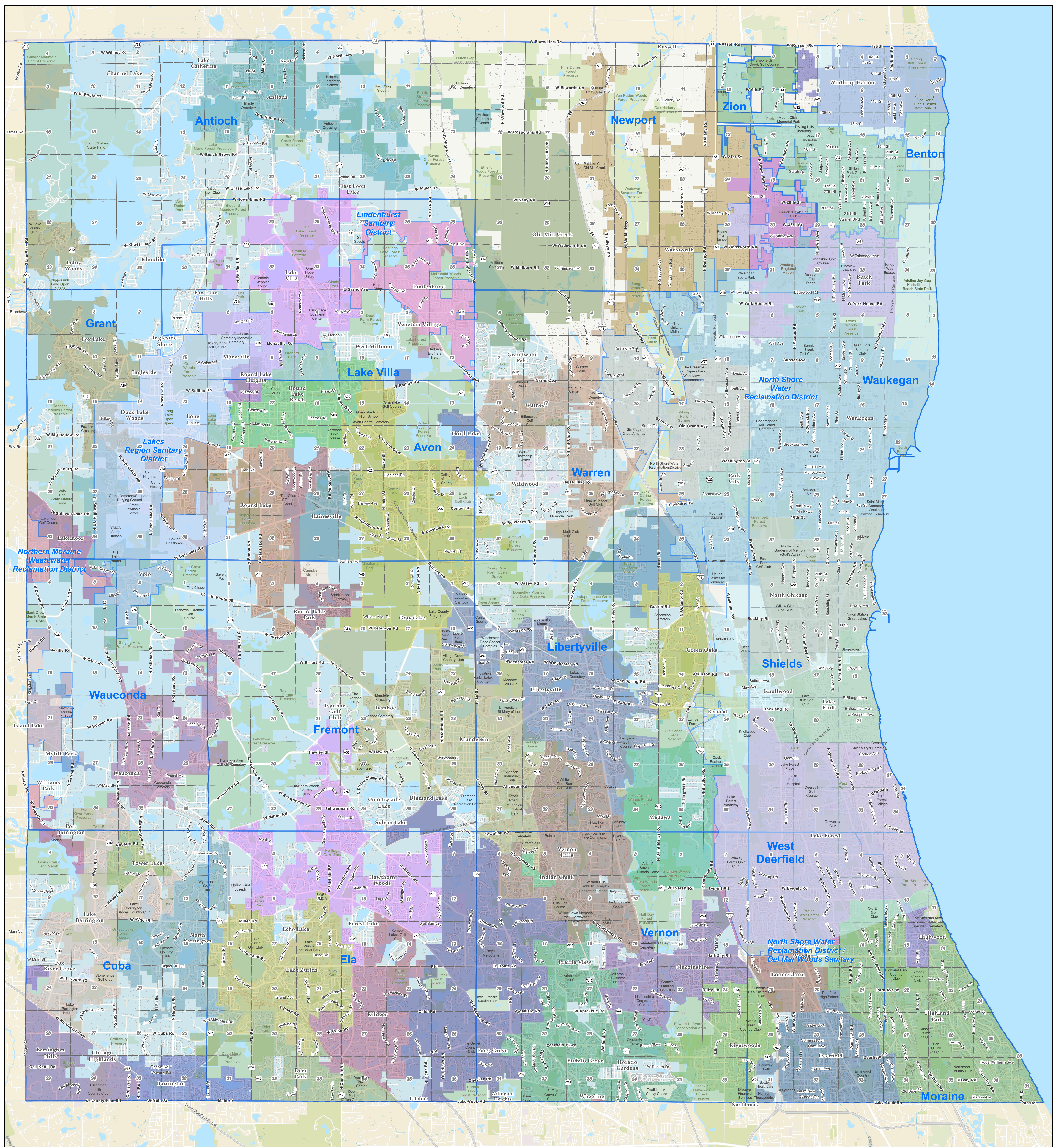
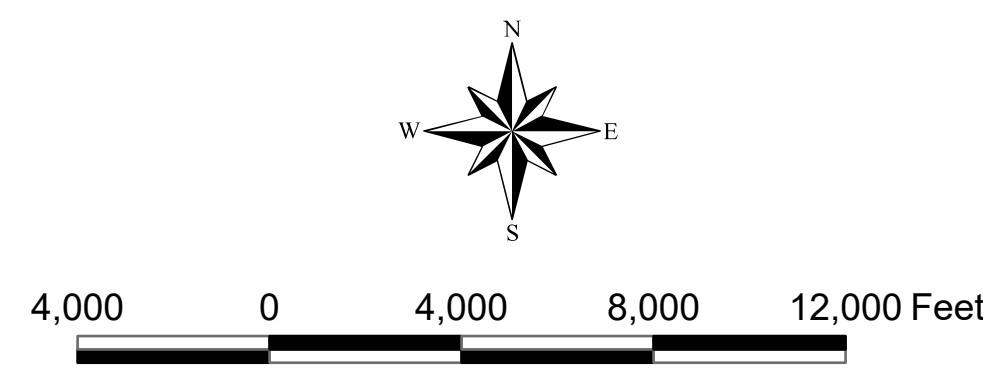
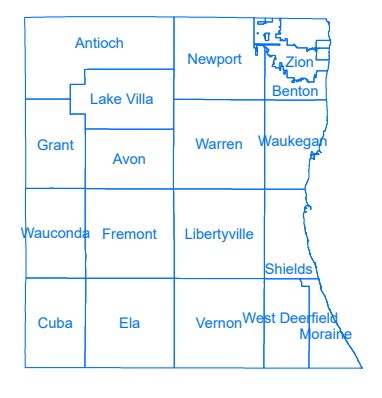
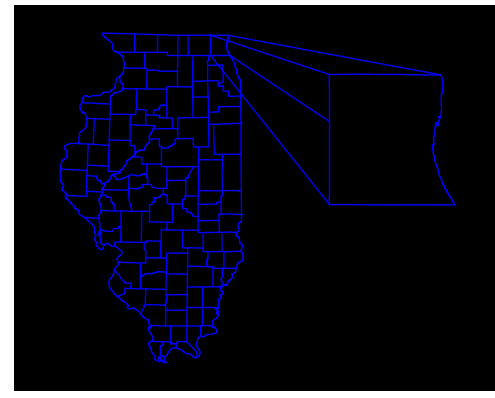


Lake County, Illinois - Sanitary Districts



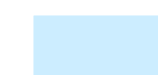
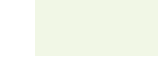




 Prepared by:
 Lake County GIS/Mapping Division
 18 North County Street
 Waukegan, Illinois 60085
 (847) 377-2388



Revised:
2023

Map Legend

-  Water
-  Parks and Forest Preserves
-  Building Footprint
-  Tax Parcels
-  District Boundary