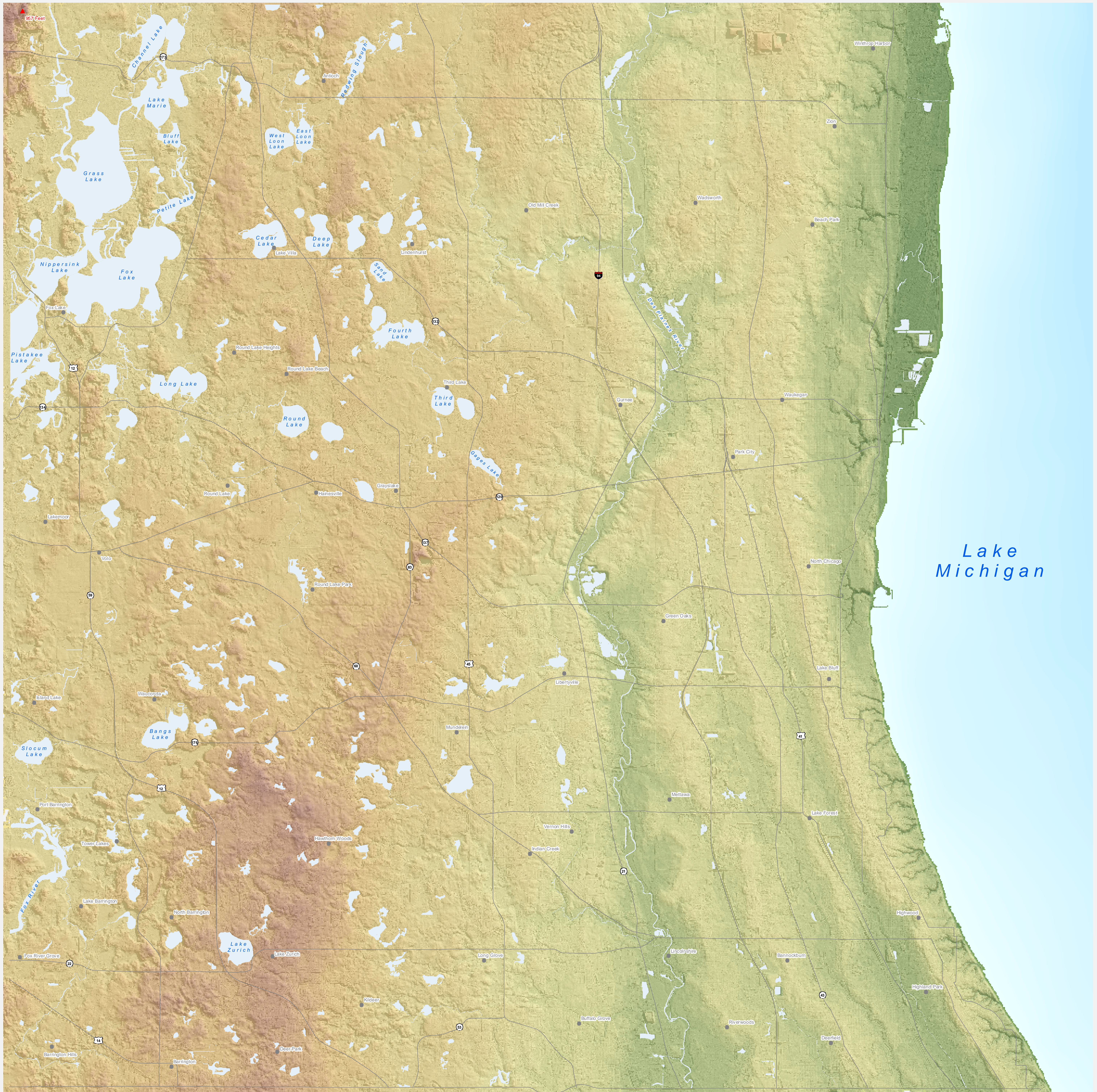
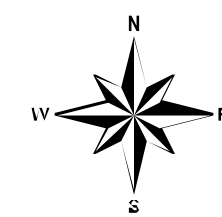
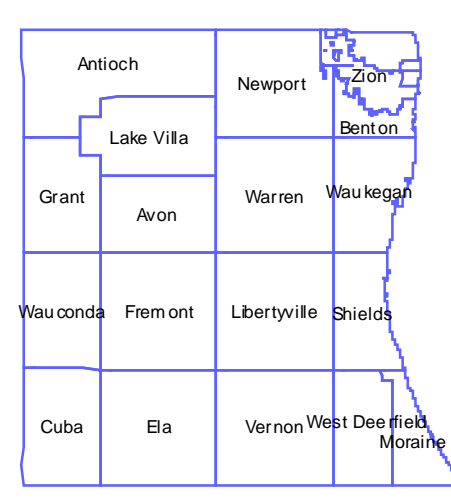
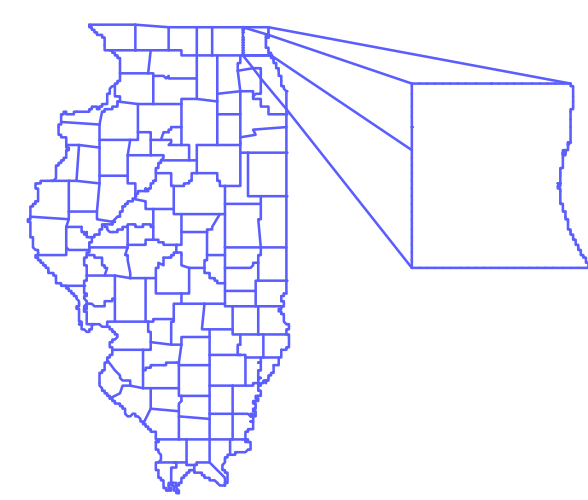


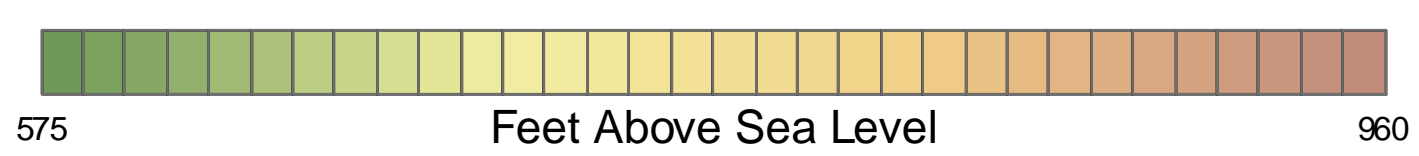
Surface Topography of Lake County, Illinois



Prepared by:
 Lake County Department of Information and Technology
 GIS/Mapping Division
 18 North County Street
 Waukegan, Illinois 60085-4357
 (847) 377-2373



0 1 1 Inch = 4000 Feet 4 5 Miles



- ▲ Highest Point in Lake County
- Urban Areas
- Interstate
- U.S. Highway
- State Highway
- Major Bodies of Water