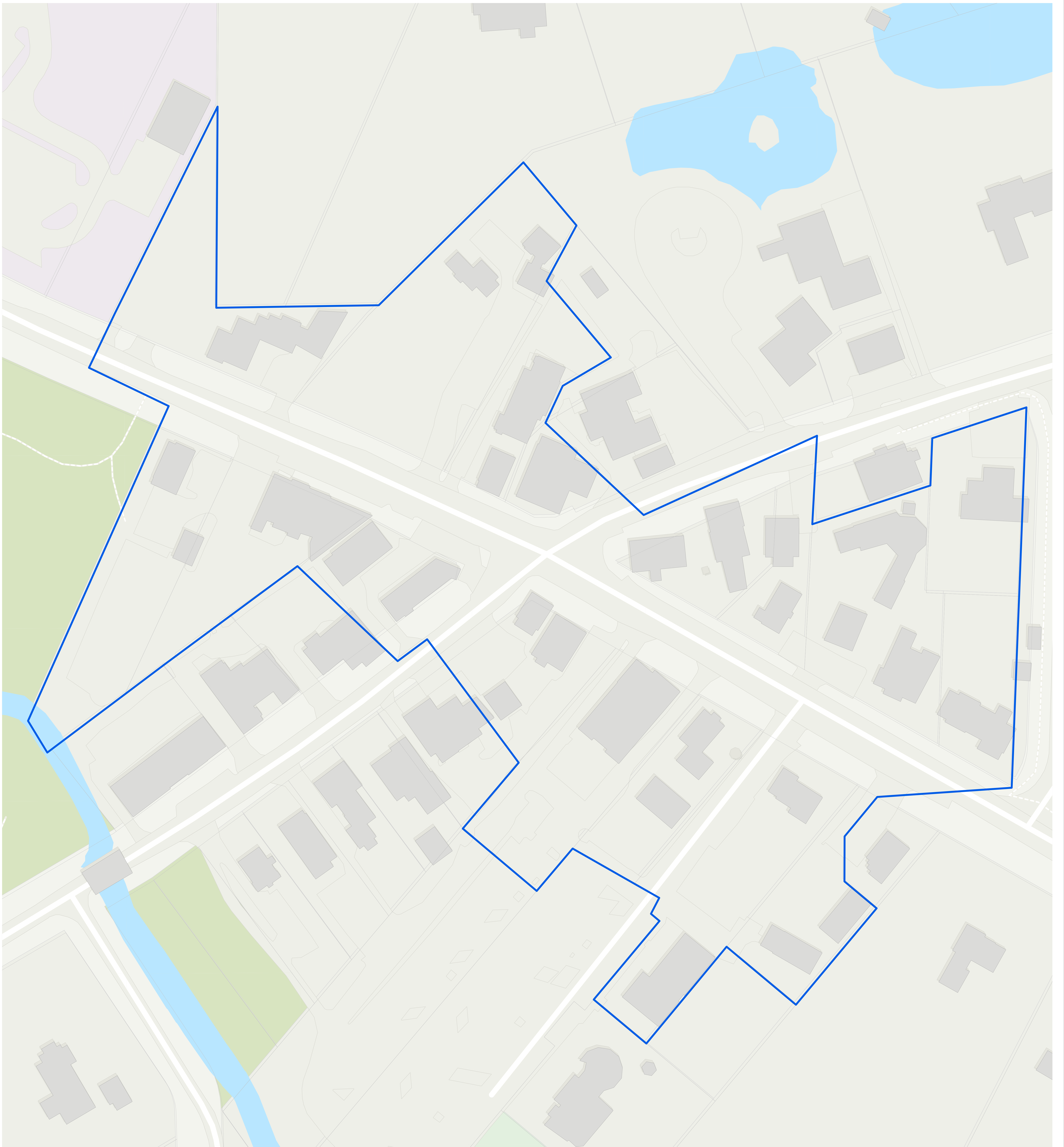
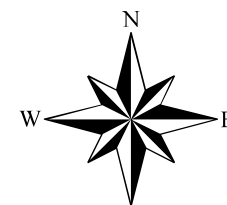
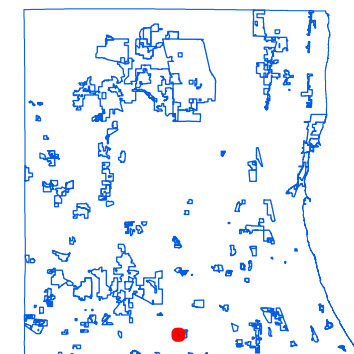
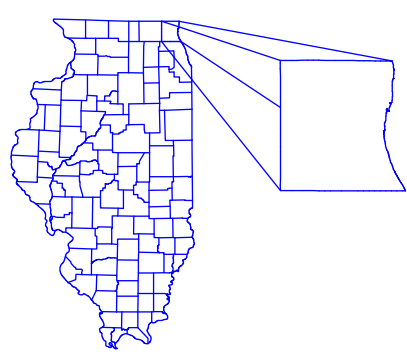


Long Grove Special Service Area 6 - Downtown Water



Prepared by:
Lake County GIS/Mapping Division
18 North County Street
Waukegan, Illinois 60085
(847) 377-2388



40 0 40 80 120 Feet

Revised:
2023

Map Legend

- Water
- Parks and Forest Preserves
- Building Footprint
- Tax Parcels
- District Boundary