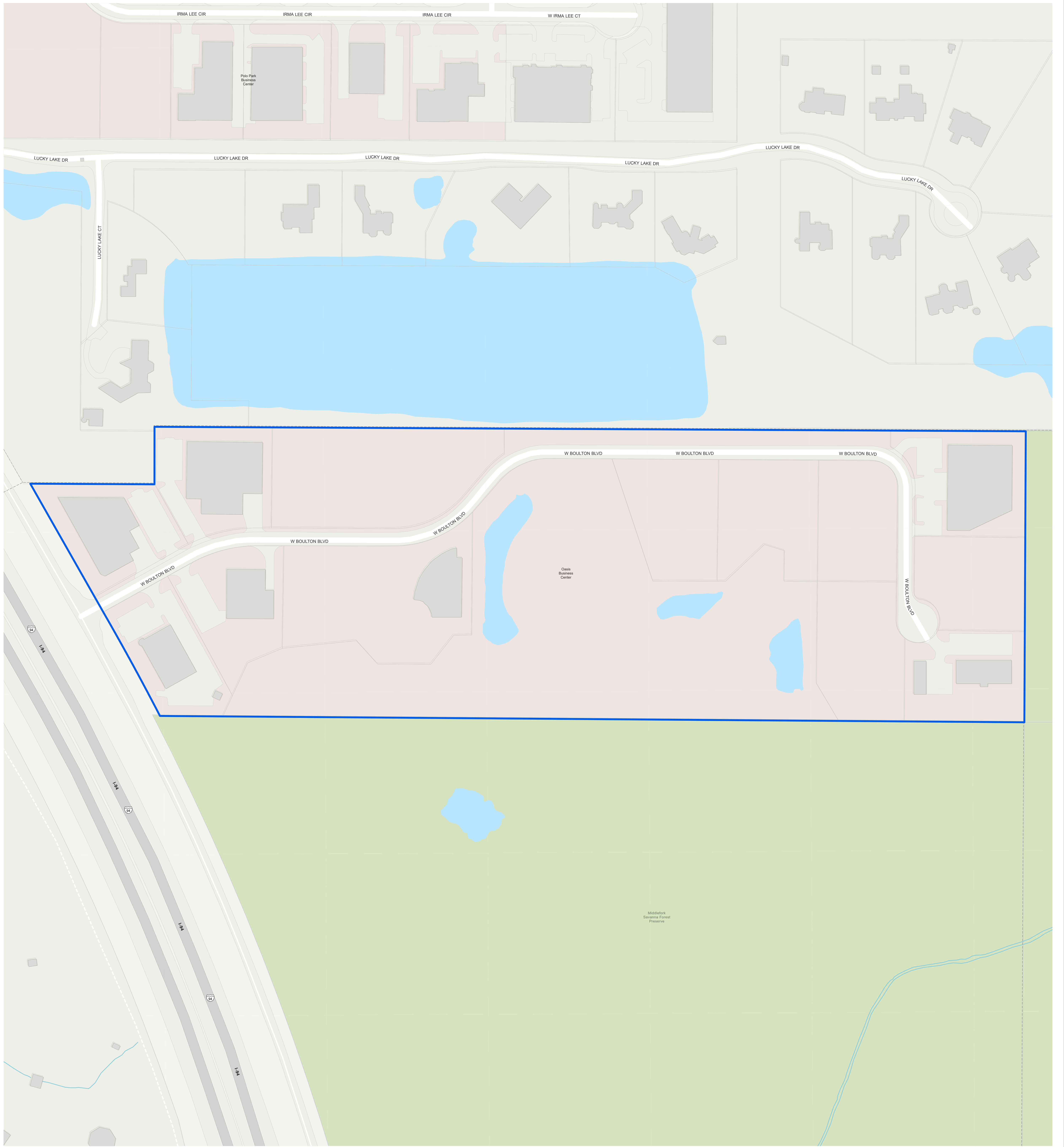
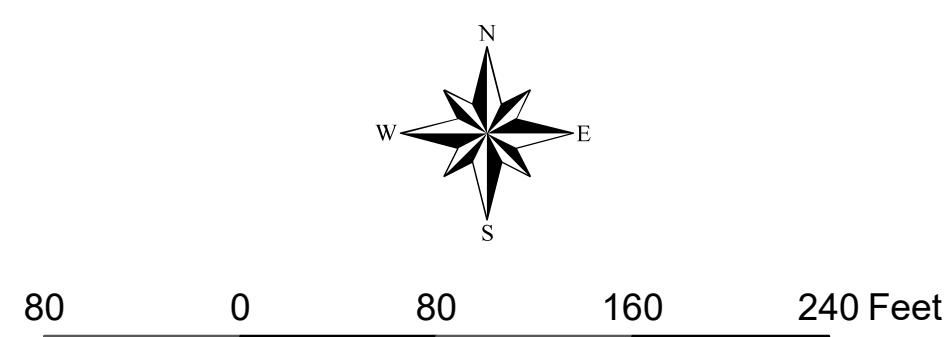
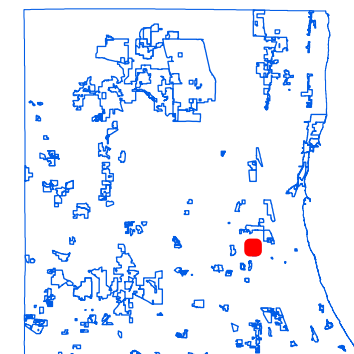
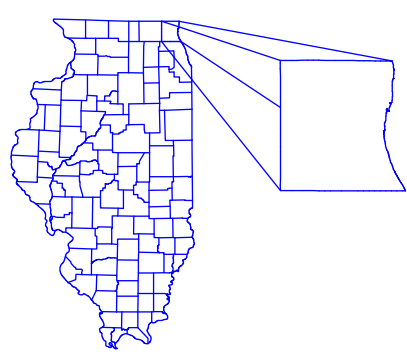


# Mettawa Special Service Area 5



Prepared by:  
Lake County GIS/Mapping Division  
18 North County Street  
Waukegan, Illinois 60085  
(847) 377-2388



Revised:  
2023

### Map Legend

- Water
- Parks and Forest Preserves
- Building Footprint
- Tax Parcels
- District Boundary