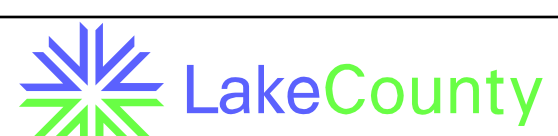
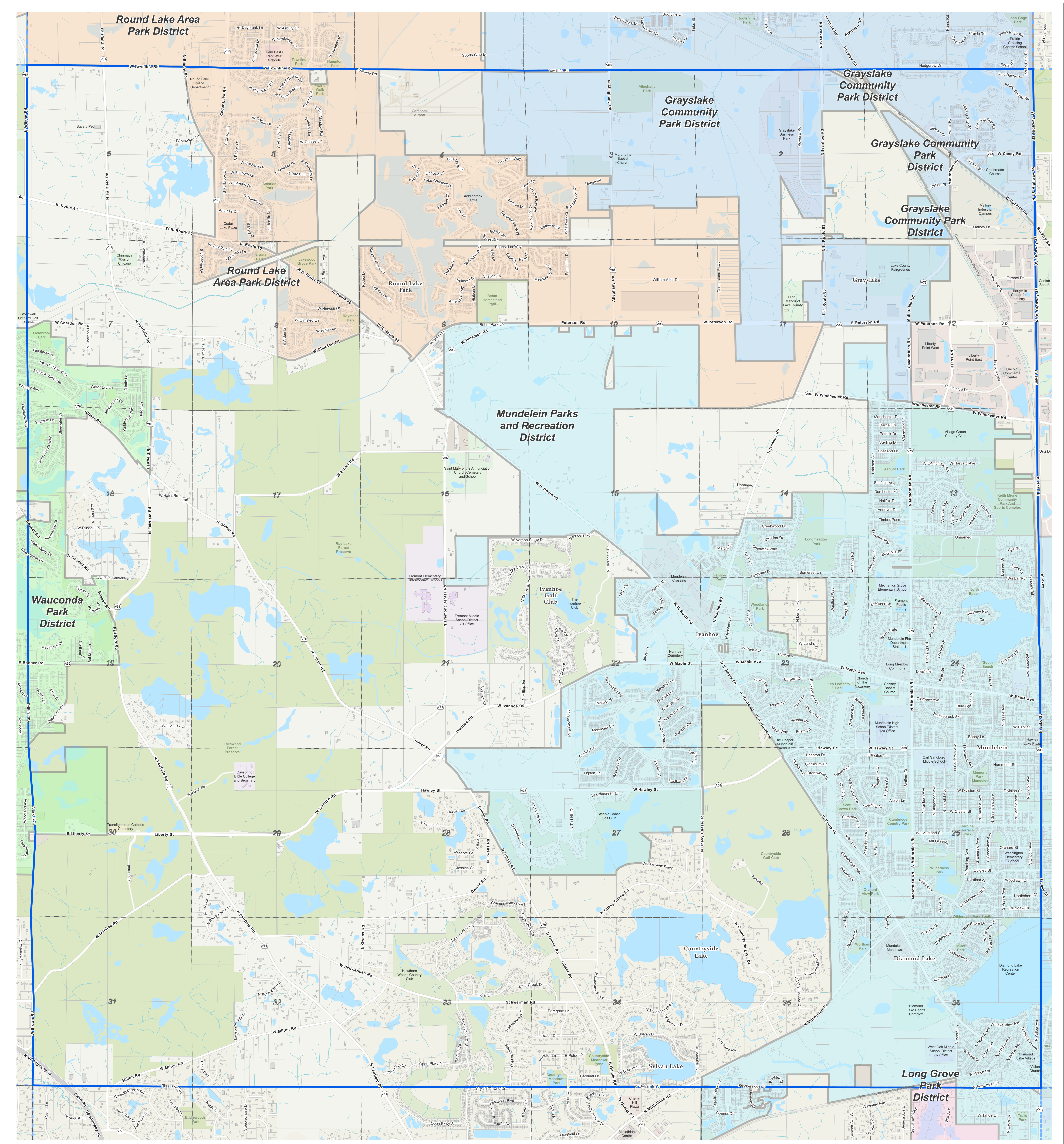
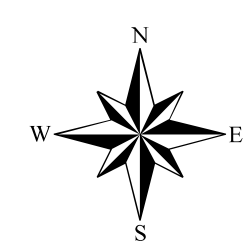
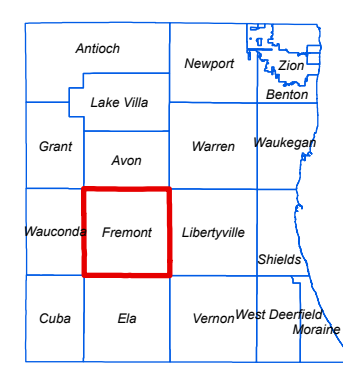
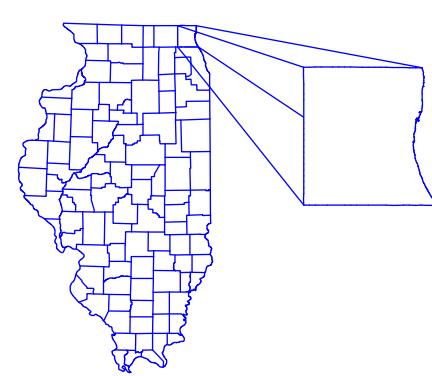


# Fremont - Park Districts



Prepared by:  
Lake County GIS/Mapping Division  
18 North County Street  
Waukegan, Illinois 60085  
(847) 377-2388



880 0 880 1,760 2,640 Feet

Revised:  
2023

## Map Legend

- Water
- Parks and Forest Preserves
- Building Footprint
- Township Boundary
- Tax Parcels
- District Boundary